



ROBOT·MODULARIZATION·SMART FACTORY

■ 750

PRODUCT INSTRUCTION

The robot adopts 6-axis design, which has simple structure, convenient operation, low energy consumption, high efficiency, high reliability, low maintenance cost and space saving. It can be applied to the teaching field, and can also be applied in the industry, suitable for welding, material handling, palletizing, packaging, polishing, gluing, assembly, spraying, etc. Installation method can choose ground installation/mount/flip - over.

Features:

Large working space
Stable performance
High precision of repeated positioning Built-in cable
Fast running speed
Strong commonality
Modular mechanical structure design

Application:

Material handling:

1. Greater flexibility. more stable performance and lower energy consumption;
2. Maximum throughput with high speed;
3. Long working and running time;
4. Save ground space;

Pallet:

1. High speed and high repeatable positioning accuracy;
2. Saving ground space;
3. Long working and running time;
4. Fixed automation;

Welding:

1. The actual welding function of clamping device can be increased;

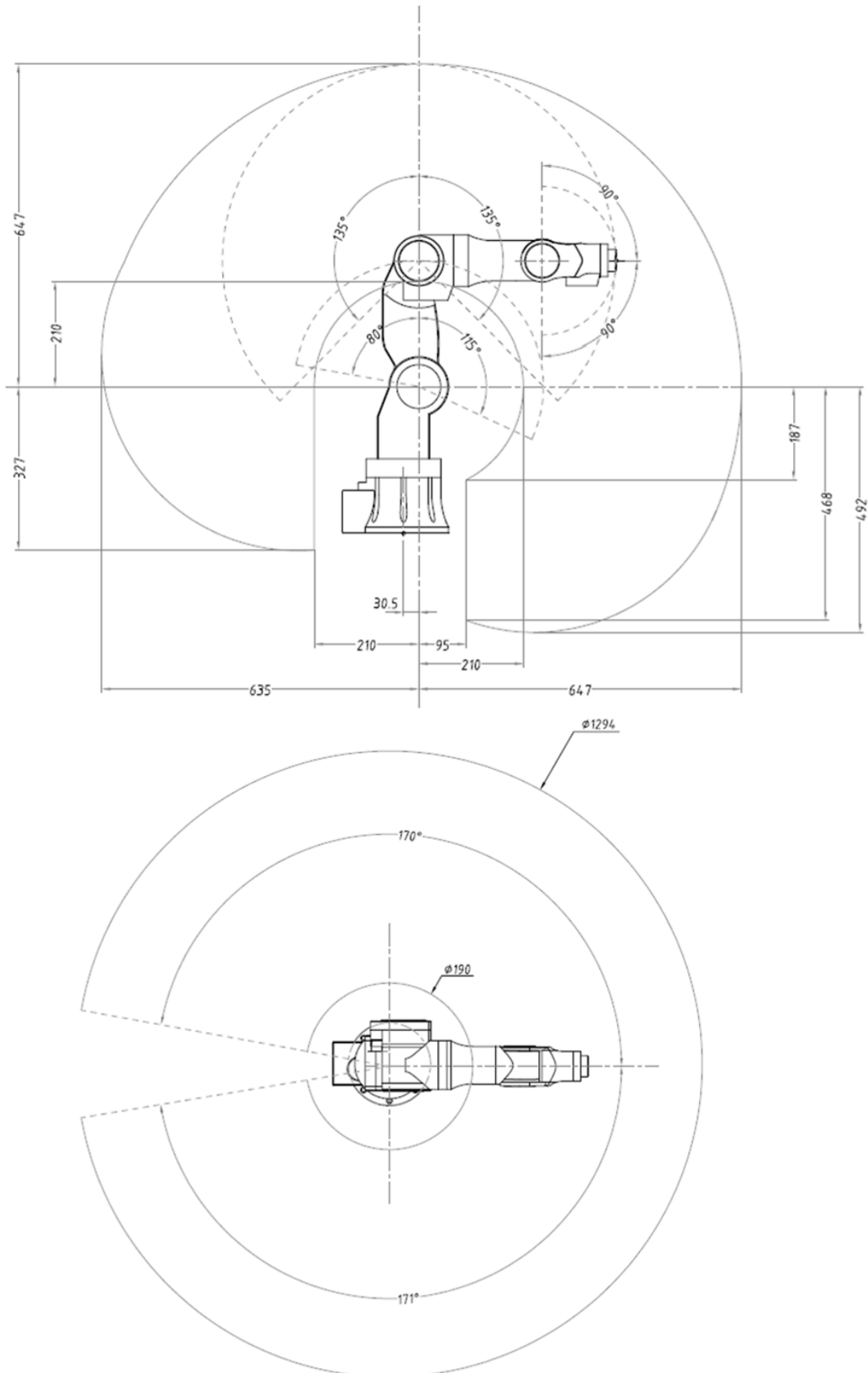




ROBOT
ANNO

WORKING SPACE

ROBOT·MODULARIZATION·SMART FACTORY





ROBOT
ANNO

ROBOT·MODULARIZATION·SMART FACTORY

SPECIFICATION

Model			750
Axis			6
Payload			2KG
Repeatability			±0.1mm
Working radius			750mm
Drive capacityEnd			0.4m/s
Efector speed			
Range of motion	Basic axis	J1	±170°
		J2	-70° ~120°
		J3	30° ~300°
	Arm shaft	J4	±160°
		J5	0~80°
		J6	±180°
Power volotage			DC48V
Power			Max100W
Environment			0-45℃, 20-80%RH (No fog)
Body Weight			10KG
Installation Method			Ground installation/mount/flip - over